

EasySSU Installation Guide

1 Running Environment

- a. Operating system Windows 7 or higher

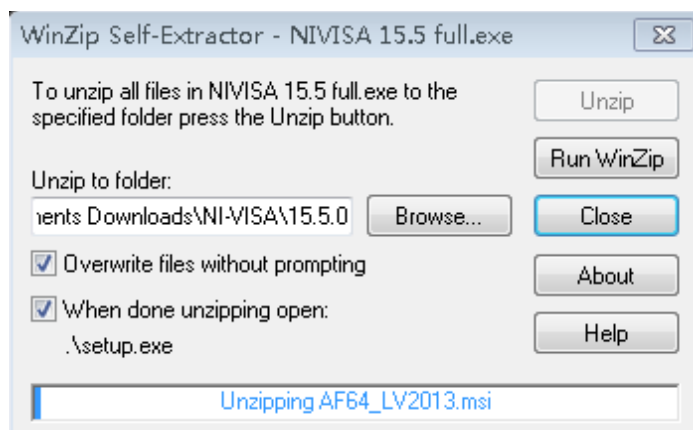
2 Install NI-MAX

Currently, NI-VISA is packaged in two versions: Full version and Run-Time Engine version. The full version includes the NI device drivers and a tool named NI-MAX which is a user interface to control and test remotely connected devices. You need to install the full version of NI-VISA.

You can get the NI-VISA 15.5 full version or higher version from

<https://www.ni.com/en-us/support/downloads/drivers/download.ni-visa.html#306031>.

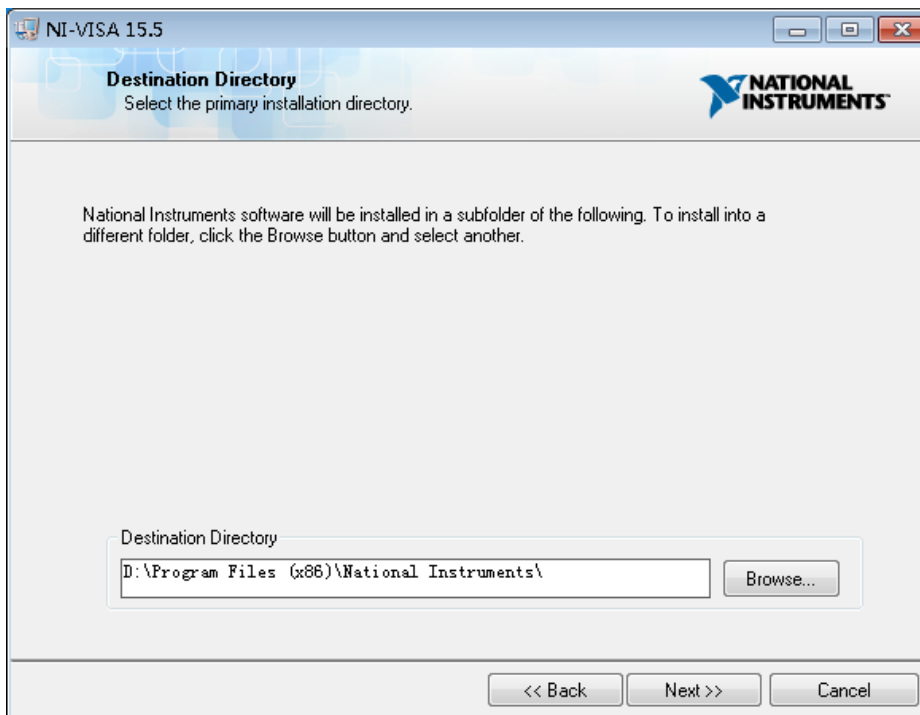
- a. Double click the NIVISA 15.5 full.exe, a dialog will be shown as below:



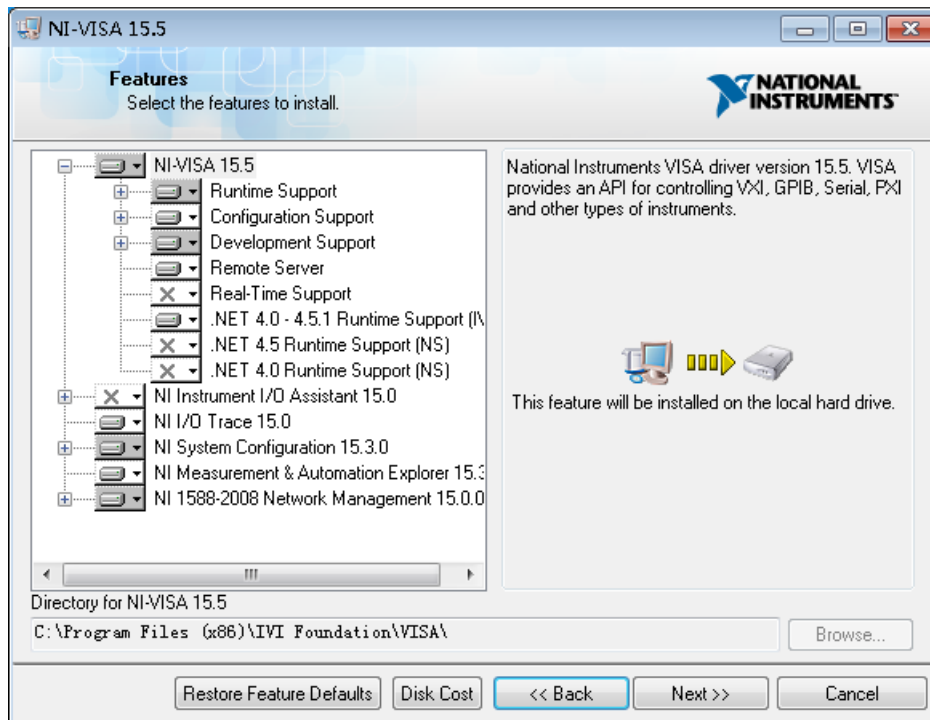
- b. Click Unzip, the installation process will automatically launch after unzipping files. If your computer needs to install .NET Framework 4, it may auto start



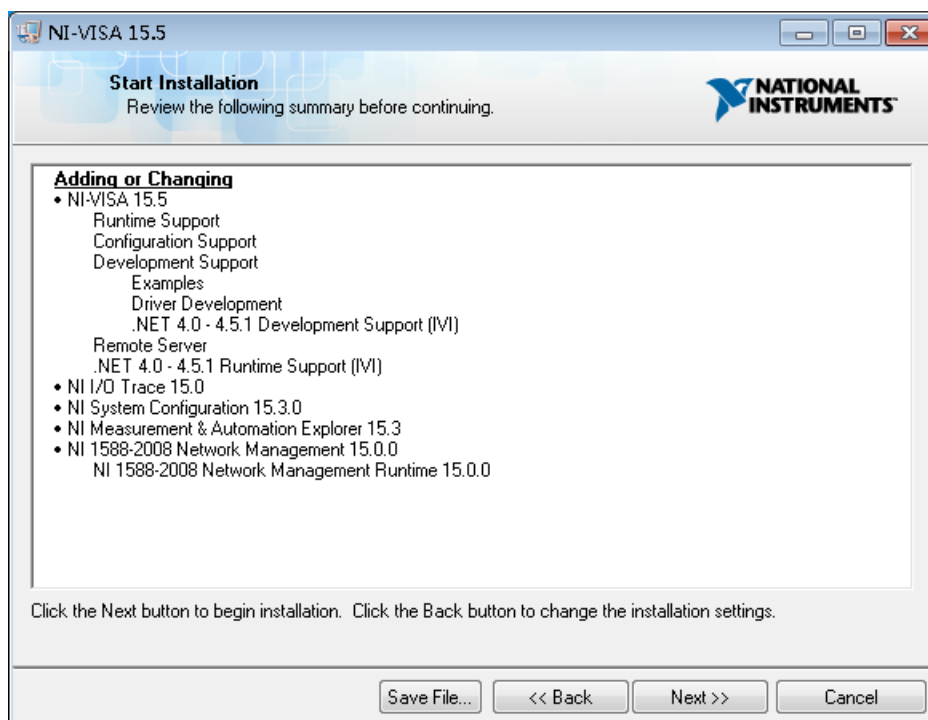
- c. The NI-VISA installing dialog is shown above. Click Next to start the installation process.



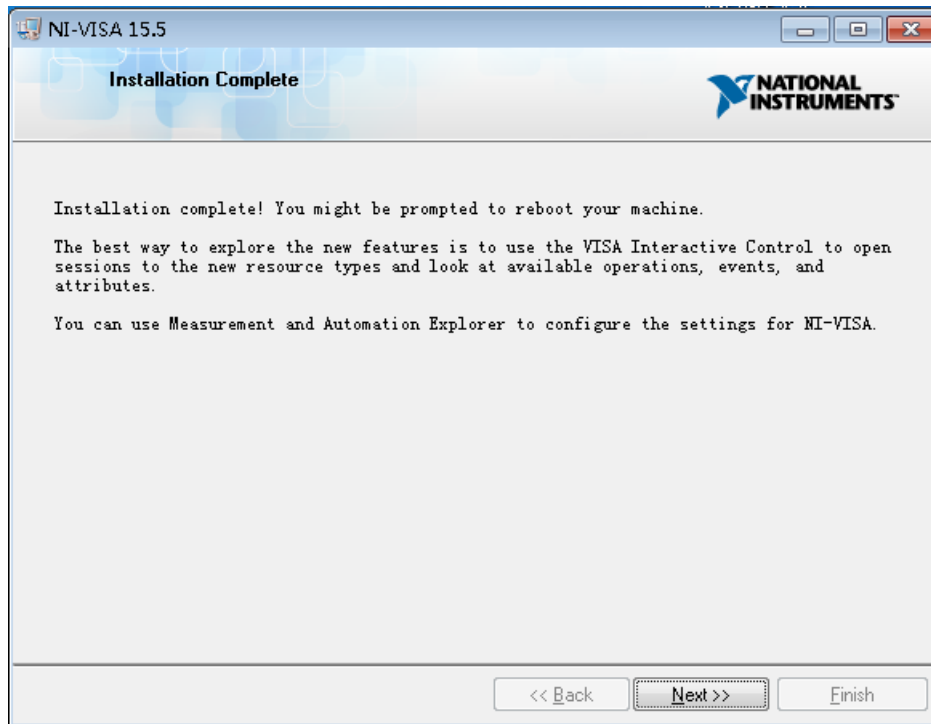
- d. Set the install path. The default path is “C:\Program Files\National Instruments\”. You can change it. Click Next.



- e. Click Next twice, in the License Agreement dialog, select “I accept the above 2 License Agreement(s).”, and click Next.



- f. Click Next to begin the installation.



- g. Wait until the installation is completed, and then reboot your PC.
- h. After reboot, run the EasySSU and refer to SSU5000A_UserManual.